



BURÇ
PLUS
YAPI

PAK
İNŞAAT

1740 ADA 18 PARSEL

BEŞİKTAŞ/ DİKİLİTAŞ





NOVA Dikilitaş

› DİKİLİTAŞIN YENİ İŞİĞİ ‹

Nova Dikilitaş

Modern mimari tasarımı ile öne çıkan 48 dairelik bu konut projesinde sizde yerinizi erkenden ayırtın.

En güncel yapı Yapı yönetmeliklerine uygun, Barbaros bulvarına, İş merkezlerine boğaz'a sadece dakikalar mesafesinde yer alırken, sakinlerine şehrin merkezinde ama karmaşadan uzak, prestijli bir yaşam vadediyor. Kısacası Nova Dikilitaş; İstanbul'un hızından kopmadan, yepyeni ve ayrıcalıklı bir yuvaya sahip olmak isteyenler için tasarlandı.



BURÇ
PLUS
YAPI



	NET:50.48m2 BRÜT:67.34m2 44	NET:51.65 m2 BRÜT:70.33 m2 45	NET:33.44 m2 BRÜT:45.16m2 46	NET:47.22m2 BRÜT:66.55m2 47	NET:46.46m2 BRÜT:62.21m2 48	
6. kat	NET:57.75m2 BRÜT:67.71m2 39	NET:48.54m2 BRÜT:57.05m2 40	NET:51.59m2 BRÜT:57.55m2 41	NET:57.18m2 BRÜT:68.45m2 42	NET:53.31m2 BRÜT:62.95m2 43	
5. kat	NET:57.75m2 BRÜT:67.71m2 34	NET:48.54m2 BRÜT:57.05m2 35	NET:51.59m2 BRÜT:57.55m2 36	NET:57.18m2 BRÜT:68.45m2 37	NET:53.31m2 BRÜT:62.95m2 38	
4. kat	NET:57.75m2 BRÜT:67.71m2 29	NET:48.54m2 BRÜT:57.05m2 30	NET:51.59m2 BRÜT:57.55m2 31	NET:57.18m2 BRÜT:68.45m2 32	NET:53.31m2 BRÜT:62.95m2 33	
3. kat	NET:57.75m2 BRÜT:67.71m2 24	NET:48.54m2 BRÜT:57.05m2 25	NET:51.59m2 BRÜT:57.55m2 26	NET:57.18m2 BRÜT:68.45m2 27	NET:53.31m2 BRÜT:62.95m2 28	
2. kat	NET:57.75m2 BRÜT:67.71m2 19	NET:48.54m2 BRÜT:57.05m2 20	NET:51.59m2 BRÜT:57.55m2 21	NET:57.18m2 BRÜT:68.45m2 22	NET:53.31m2 BRÜT:62.95m2 23	
1. kat	NET:57.75m2 BRÜT:67.71m2 14	NET:48.54m2 BRÜT:57.05m2 15	NET:51.59m2 BRÜT:57.55m2 16	NET:57.18m2 BRÜT:68.45m2 17	NET:53.31m2 BRÜT:62.95m2 18	
zemin kat	NET:57.75m2 BRÜT:67.71m2 9	NET:48.54m2 BRÜT:57.05m2 10	NET:51.59m2 BRÜT:57.55m2 11	NET:57.18m2 BRÜT:68.45m2 12	NET:53.31m2 BRÜT:62.95m2 13	
1.bodrum kat	NET:40.45m2 BRÜT:46.27m2 4	NET:31.29m2 BRÜT:35.80m2 5	NET:38.90m2 BRÜT:41.91m2 6	NET:43.79m2 BRÜT:49.62m2 7	NET:41.60m2 BRÜT:49.25m2 8	NET:16.92m2 BRÜT:22.06m2
2.bodrum kat	NET:47.58m2 BRÜT:53.95m2 1	NET:33.86m2 BRÜT:39.28m2 2	TEKNİK HACİM	NET:25.97m2 BRÜT:30.67m2 3		
3.bodrum kat	KAPALI OTOYAK VE TEKNİK HACİM					

1 + 1 DAIRE

PAK
İNŞAAT

BURÇ
PLUS
YAPI

SALON + MUTFAK: 19.35 M²

ODA: 16.92 M²

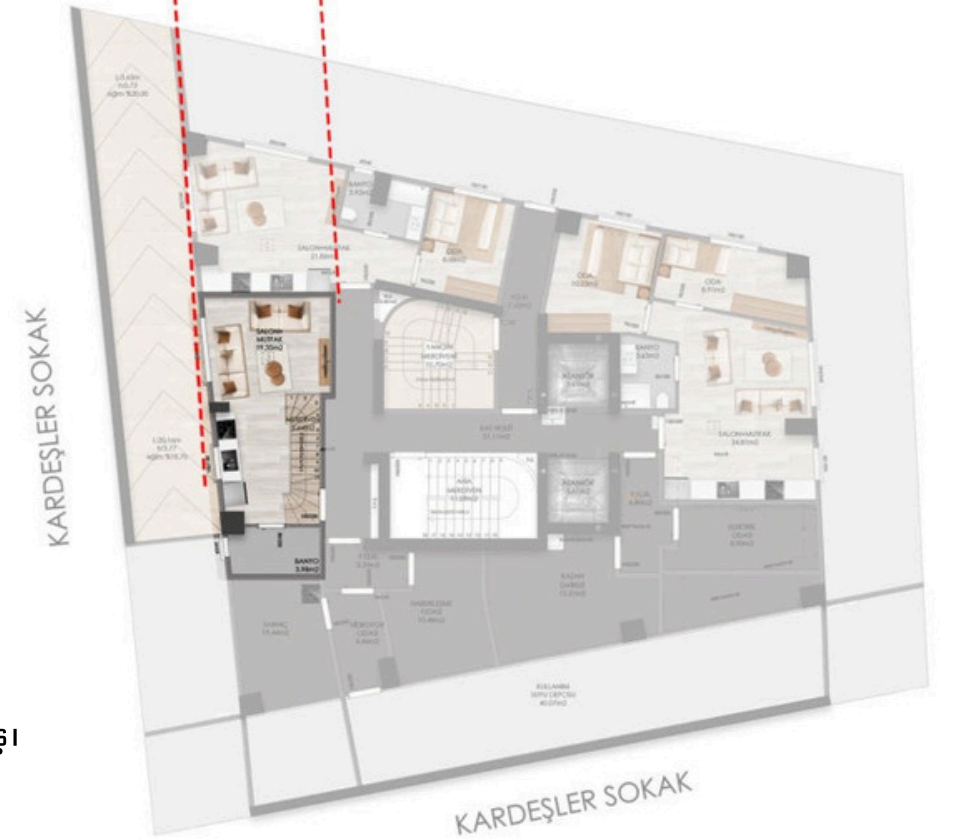
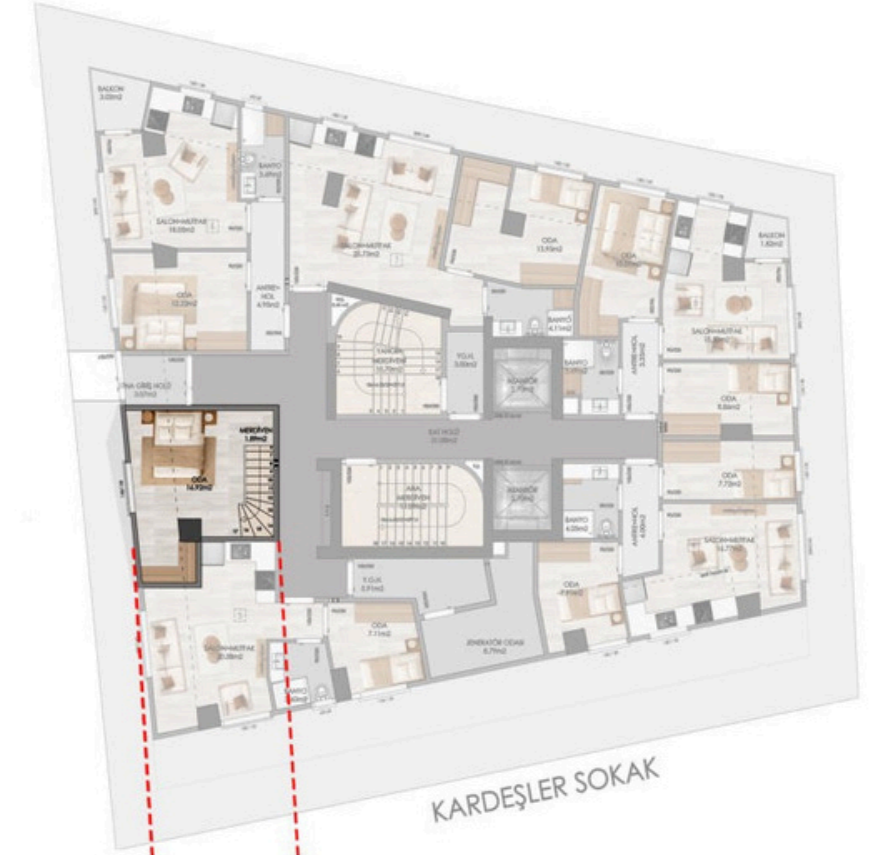
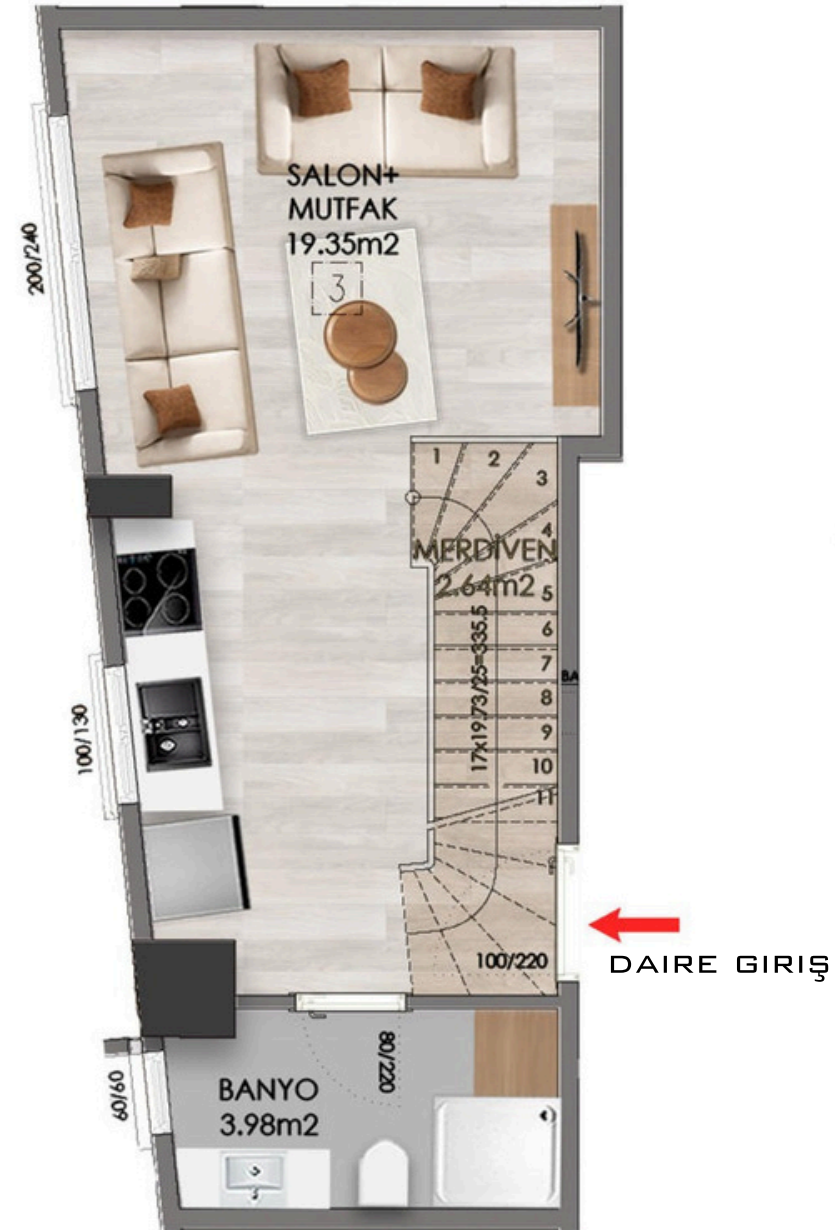
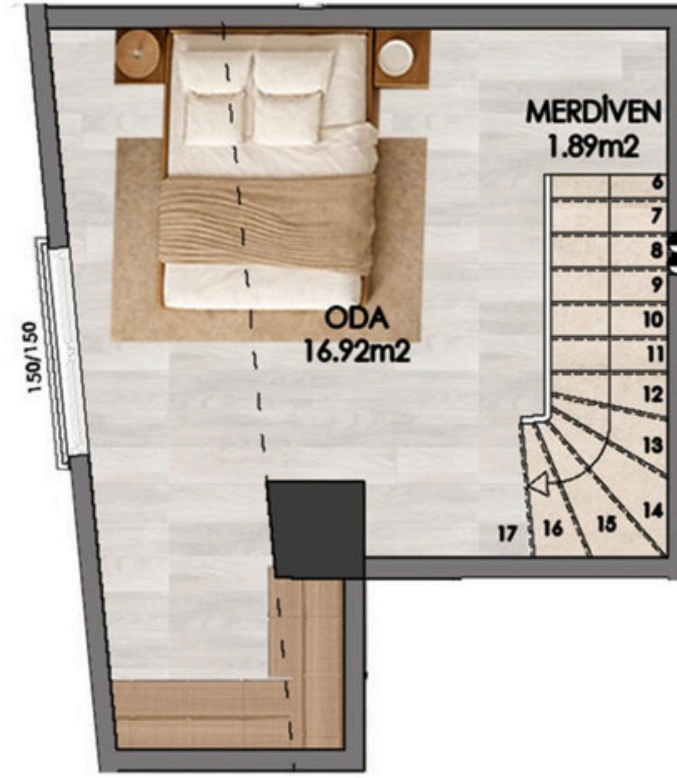
BANYO : 3.98 M²

MERDİVEN : 2.64 M²

NET ALAN: 42.89 M²

BRÜT ALAN: 52.73 M²

GENEL BRÜT: 79.13 M²



1 + 1 DAIRE

PAK
İNŞAAT

BURÇ
PLUS
YAPI

SALON + MUTFAK: 25.73 M²

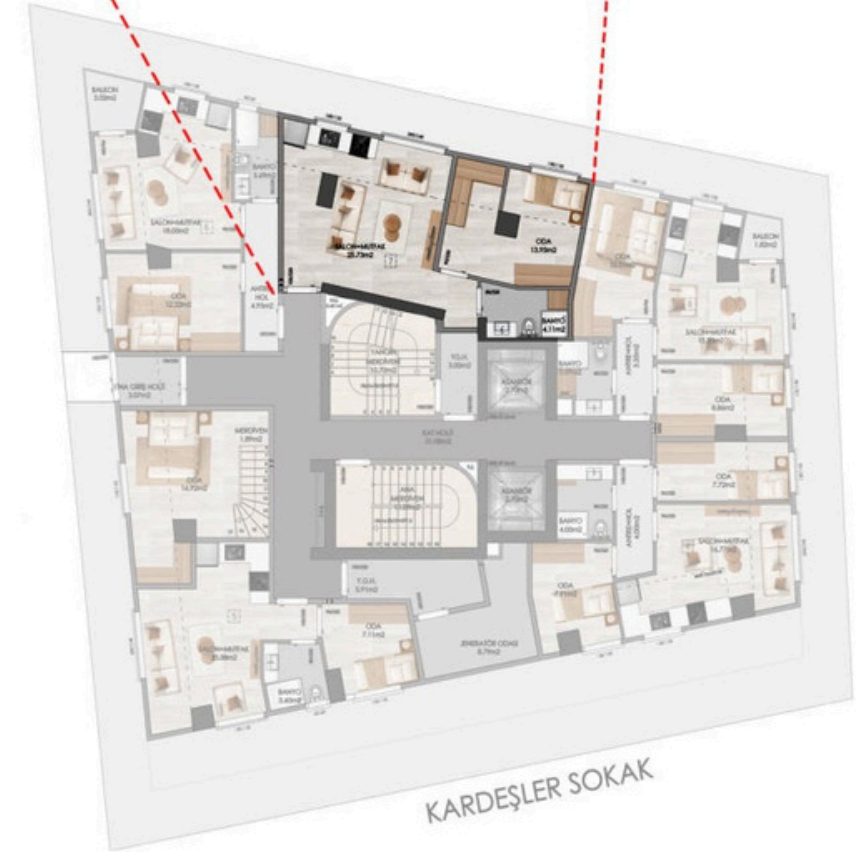
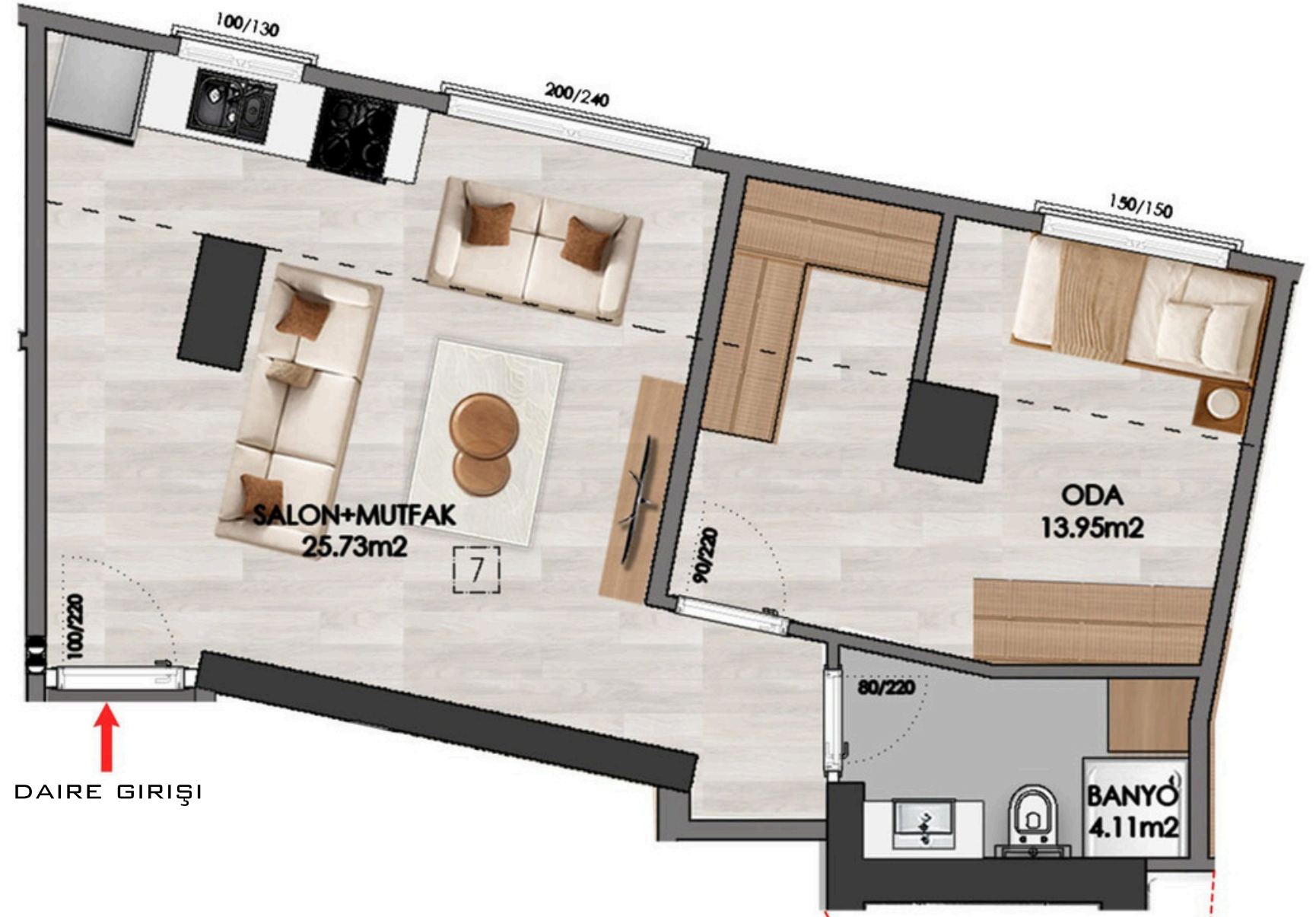
ODA: 13.95 M²

BANYO : 4.11 M²

NET ALAN: 43.79 M²

BRÜT ALAN: 49.62 M²

GENEL BRÜT: 74.46 M²



1. BODRUM KAT PLANI

2+1 DAIRE

PAK
İNŞAAT

BURÇ
PLUS
YAPI

SALON : 19.01 M²

MUTFAK : 8.39 M²

ANTRE+HOL : 4.08 M²

Y.ODASI : 14.22 M²

ODA : 8.36 M²

BANYO : 3.69 M²

BALKON : 1.95 M²

NET ALAN: 59.70 M²

BRÜT ALAN: 67.71 M²

GENEL BRÜT: 101.60 M²



ZEMİN- 6. KAT PLANI

2 + 1 DAIRE

PAK
İNŞAAT

BURÇ
PLUS
YAPI

SALON + MUTFAK : 20.16 M²

ANTRE+HOL : 6.48 M²

Y.ODASI : 10.00 M²

ODA : 8.30 M²

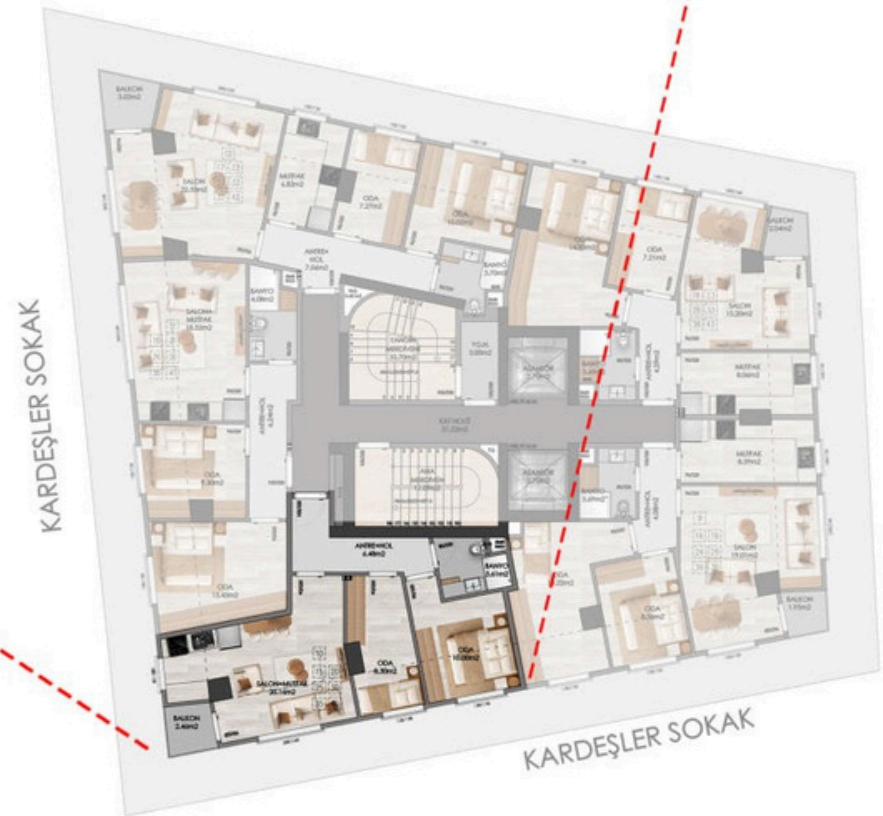
BANYO : 3.61 M²

BALKON : 2.46 M²

NET ALAN: 51.01 M²

BRÜT ALAN: 57.05 M²

GENEL BRÜT: 85.61 M²



ZEMİN- 6. KAT PLANI

2+1 DAIRE

PAK
İNŞAAT

BURÇ
PLUS
YAPI

SALON : 18.52 M²

ANTRE+HOL : 6.24 M²

Y.ODASI : 13.45 M²

ODA : 9.30 M²

BANYO : 4.08 M²

NET ALAN: 51.59 M²

BRÜT ALAN: 57.55 M²

GENEL BRÜT:86.36 M²



KARDEŞLER SOKAK

KARDEŞLER SOKAK

ZEMİN- 6. KAT PLANI

2 + 1 DAIRE

PAK
İNŞAAT

BURÇ
PLUS
YAPI

SALON : 22.33 M²

MUTFAK : 6.82 M²

ANTRE+HOL : 7.06 M²

Y.ODASI : 10.02 M²

ODA : 7.27 M²

BANYO : 3.70 M²

BALKON : 3.02 M²

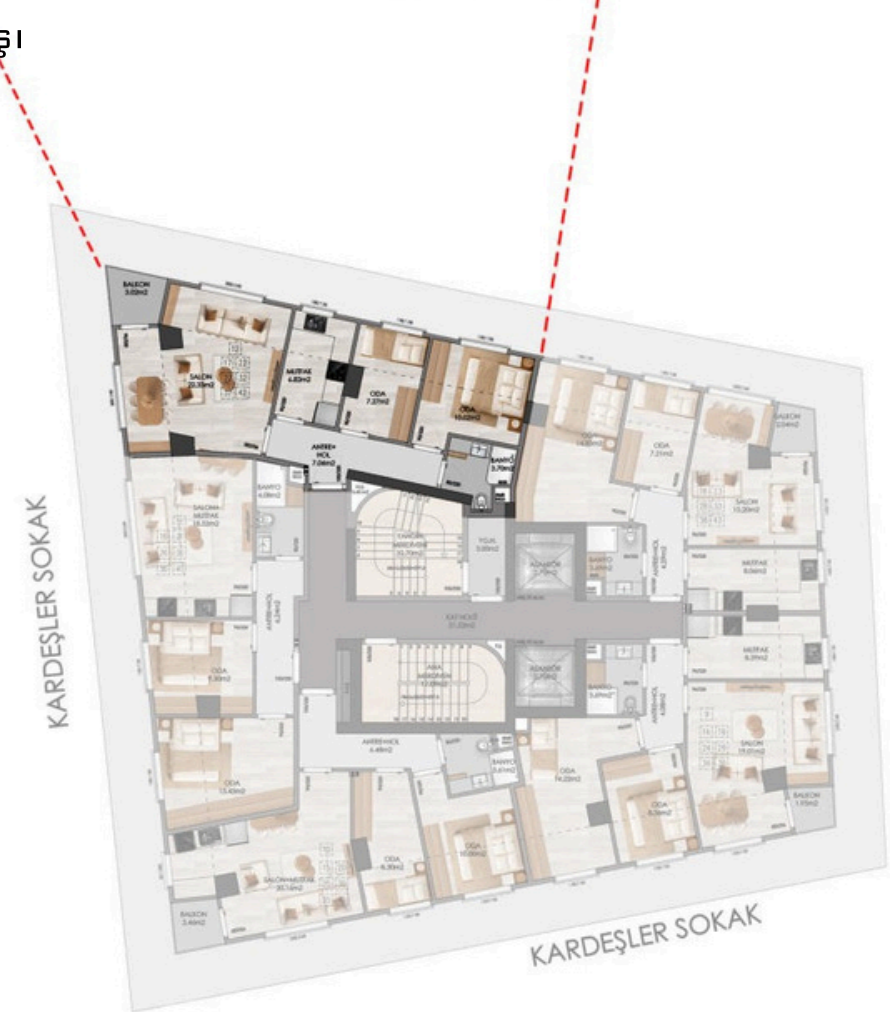
NET ALAN: 60.22 M²

BRÜT ALAN: 68.45 M²

GENEL BRÜT: 102.71 M²



DAIRE GİRİŞİ



ZEMİN- 6. KAT PLANI

2 + 1 DAIRE

PAK
İNŞAAT

BURÇ
PLUS
YAPI

SALON : 15.20 M²

MUTFAK : 8.06 M²

ANTRE+HOL : 4.29 M²

Y.ODASI : 14.85 M²

ODA : 7.21 M²

BANYO : 3.69 M²

BALKON : 2.04 M²

NET ALAN: 55.34 M²

BRÜT ALAN: 62.95 M²

GENEL BRÜT: 94.46 M²



DAIRE GİRİŞİ



ZEMİN- 6. KAT PLANI

2 + 1 DAIRE

PAK
İNŞAAT

BURÇ
PLUS
YAPI

SALON + MUTFAK : 26.17 M²

Y.ODASI : 11.57 M²

ODA : 6.19 M²

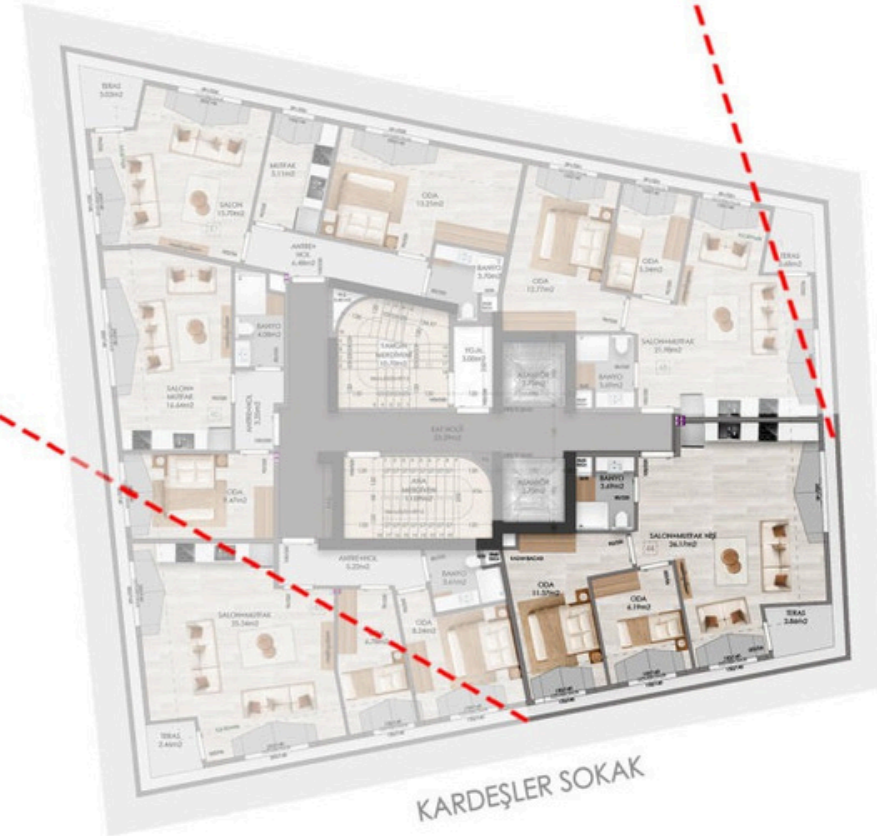
BANYO : 3.69 M²

TERAS : 2.86 M²

NET ALAN: 50.48 M²

BRÜT ALAN: 67.34 M²

GENEL BRÜT: 101.05 M²



ÇATI KATI PLANI

2 + 1 DAIRE

PAK
İNŞAAT

BURÇ
PLUS
YAPI

SALON + MUTFAK : 25.34 M²

ANTRE + HOL : 5.22 M²

Y.ODASI : 8.24 M²

ODA : 6.78 M²

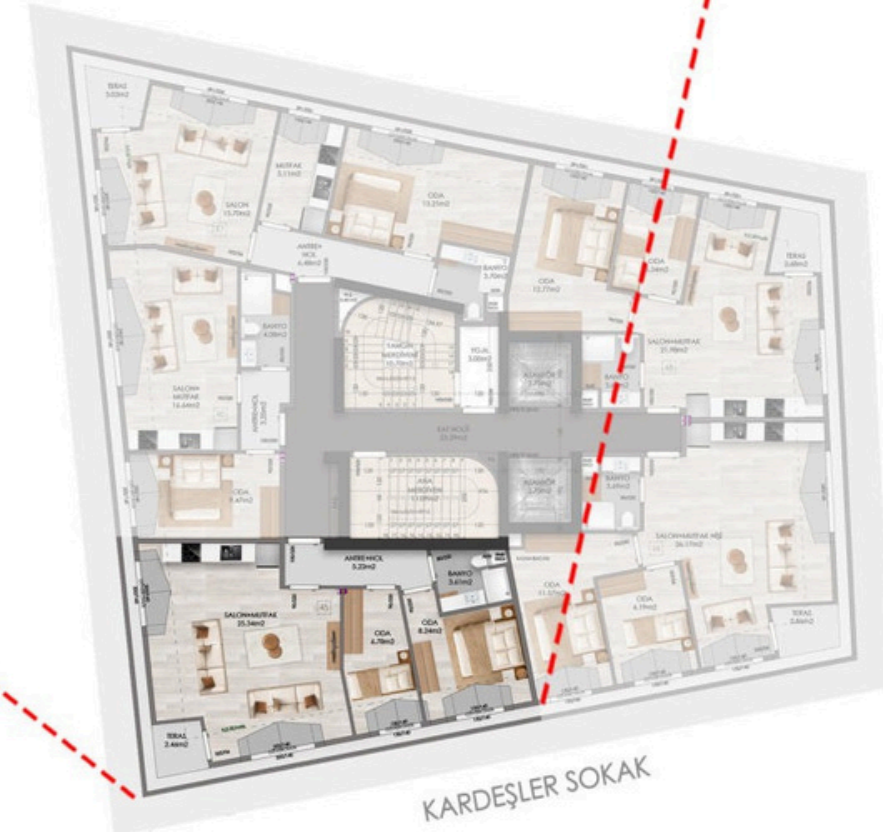
BANYO : 3.61 M²

TERAS : 2.46 M²

NET ALAN: 51.65 M²

BRÜT ALAN: 70.33 M²

GENEL BRÜT: 105.54 M²



ÇATI KATI PLANI

1 + 1 DAIRE

PAK
İNŞAAT

BURÇ
PLUS
YAPI

SALON + MUTFAK : 16.64 M²

ANTRE + HOL : 3.25 M²

BANYO : 4.08 M²

Y.ODASI : 9.47 M²

NET ALAN: 33.44 M²

BRÜT ALAN: 45.16 M²

GENEL BRÜT: 67.77 M²



DAIRE GİRİŞİ



ÇATI KATI PLANI

1 + 1 DAIRE

PAK
İNŞAAT

BURÇ
PLUS
YAPI

SALON : 15.70 M²

MUTFAK: 5.11 M²

ANTRE + HOL : 6.48 M²

ODA : 13.21 M²

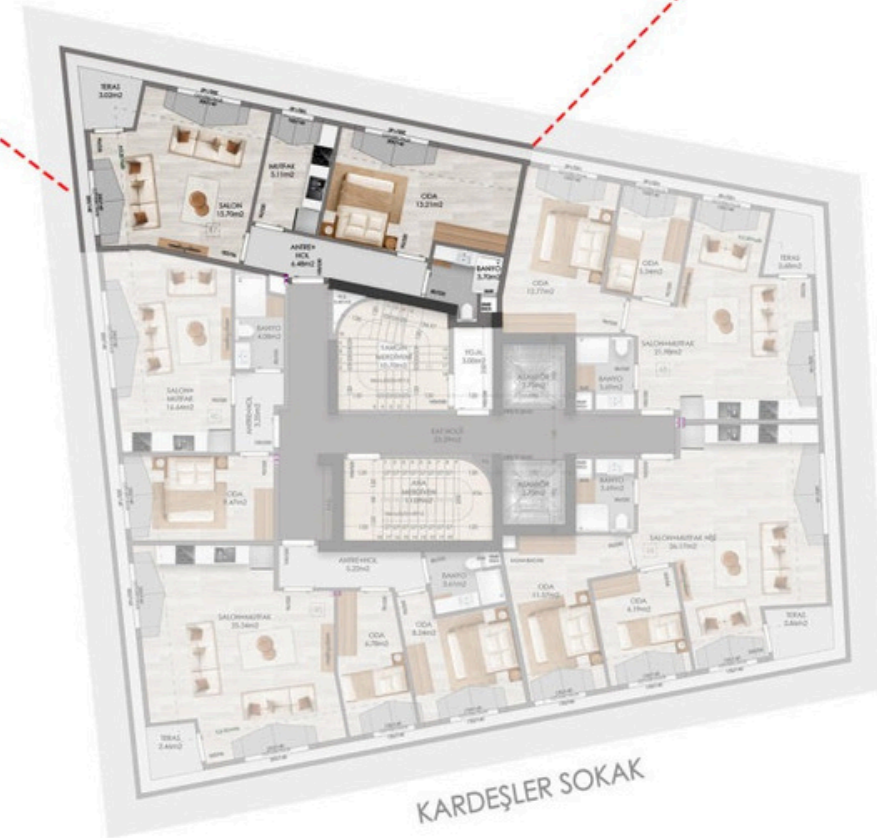
BANYO : 3.70 M²

BANYO : 3.02 M²

NET ALAN: 47.22 M²

BRÜT ALAN: 66.55 M²

GENEL BRÜT: 99.86 M²



ÇATI KATI PLANI

2 + 1 DAIRE

PAK
İNŞAAT

BURÇ
PLUS
YAPI

SALON + MUTFAK : 21.98 M²

Y.ODASI : 12.77 M²

ODA : 5.34 M²

BANYO : 3.69 M²

TERAS : 2.68 M²

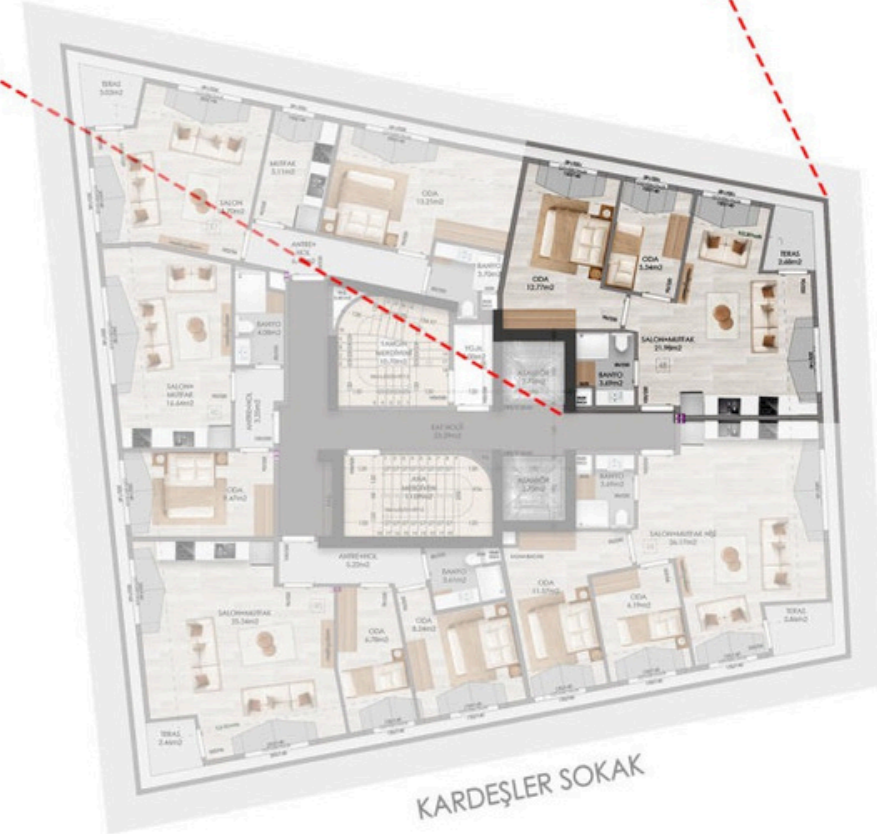
NET ALAN: 46.46 M²

BRÜT ALAN: 62.21 M²

GENEL BRÜT: 93.35 M²



DAIRE GİRİŞİ



ÇATI KATI PLANI



BURÇ
PLUS
YAPI

DAİRE GÖRSELLERİ



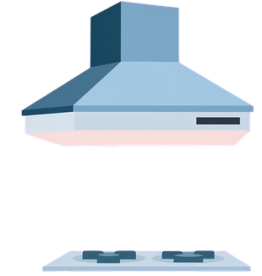
PROJENİN AVANTAJLARI



TÜM DAİRELERDE
BALKON



AÇIK VE KAPALI OTOPARK
ALANLARI



3 LÜ ANKASTRE VE
PORTMANTO

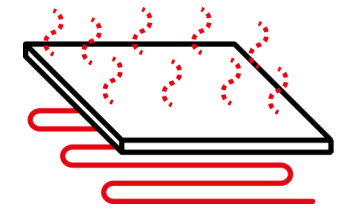
GERİ DÖNÜŞTÜRÜLEBİLİR
GRİ SU KULLANIMI

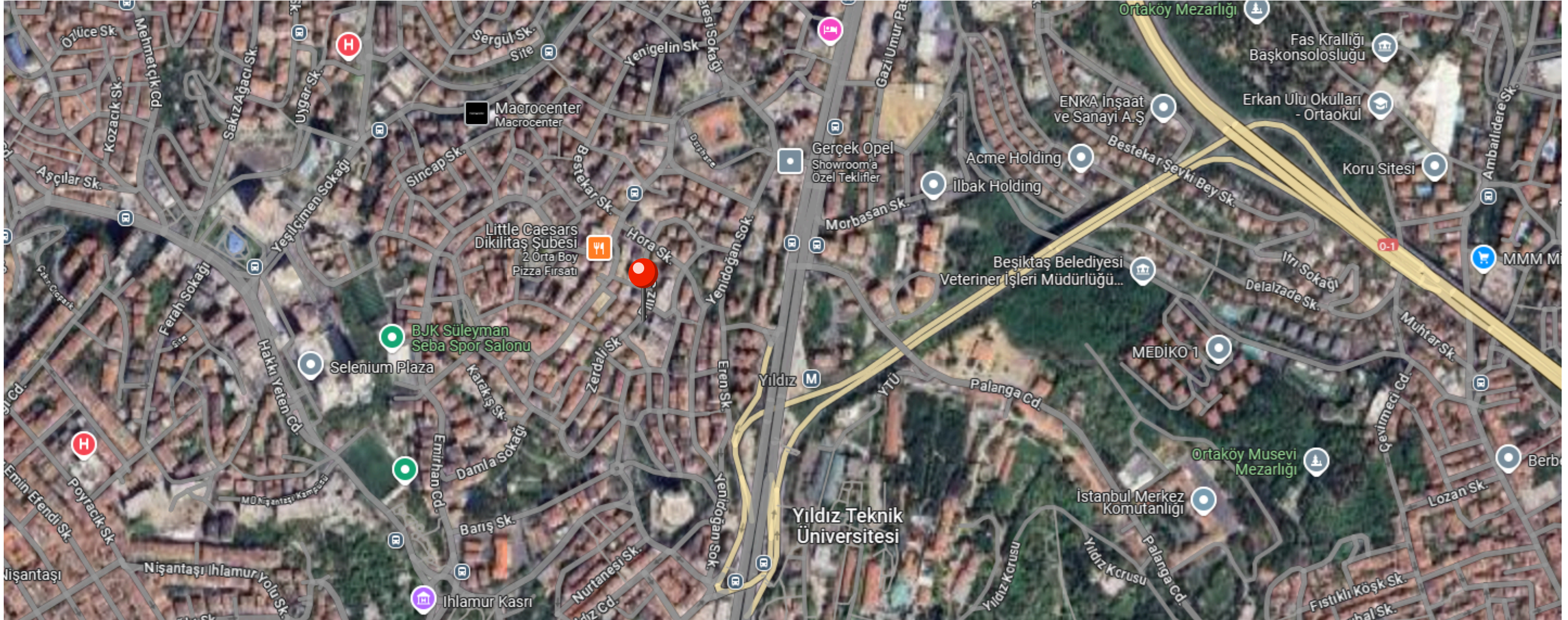


ELEKTRİKLİ ARAÇLAR
İÇİN ŞARJ İSTASYONU



YERDEN ISITMA





- Acıbadem Hastanesi
- Fulya Metro Durağı
- Nişantaşı
- Zorlu Center
- Yıldız Parkı
- Beşiktaş Çarşısı

- 600 mt
- 1 km
- 1,8 km
- 2 km
- 2,1 km
- 2,4 km
- Bahçeşehir Üniversitesi
- Yıldız Teknik Üniversitesi
- Beşiktaş Vapur İskelesi
- Zincirlikuyu Metrobüs Durağı
- 15 Temmuz ve Şehitler Köprüsü
- Akmerkez

- 2,4 km
- 2,5 km
- 2,5 km
- 2,8 km
- 3 km
- 3,7 km

PROJENİN KONUMU

